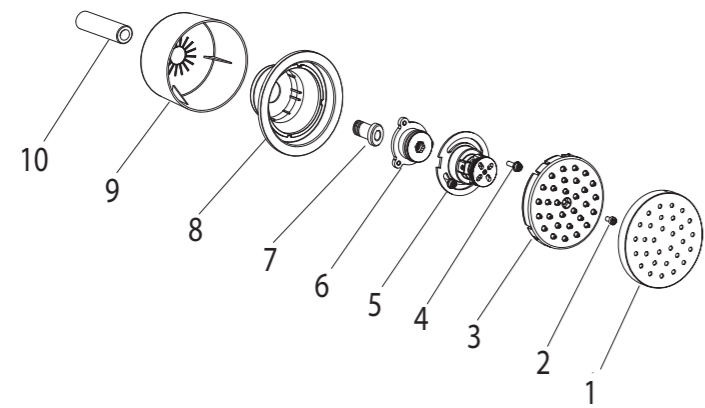
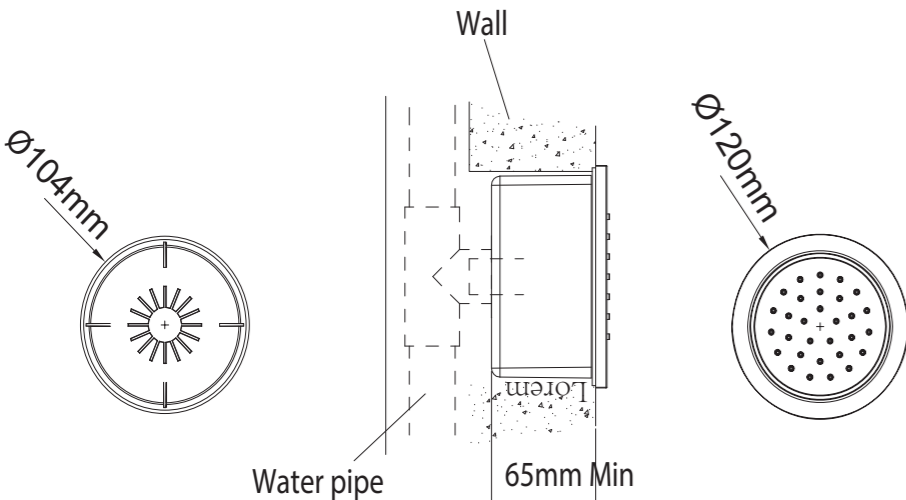


1. Parts list

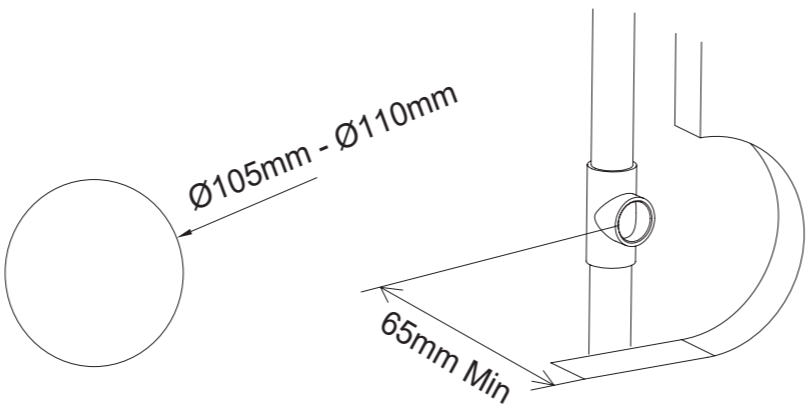
- 1. Front plate
- 2. M4x12 Screws
- 3. Nozzle plate
- 4. M4x20 Screws
- 5. Main body
- 6. Connector 1
- 7. Connector 2
- 8. Cove plate
- 9. Cover
- 10. 1/2" connector



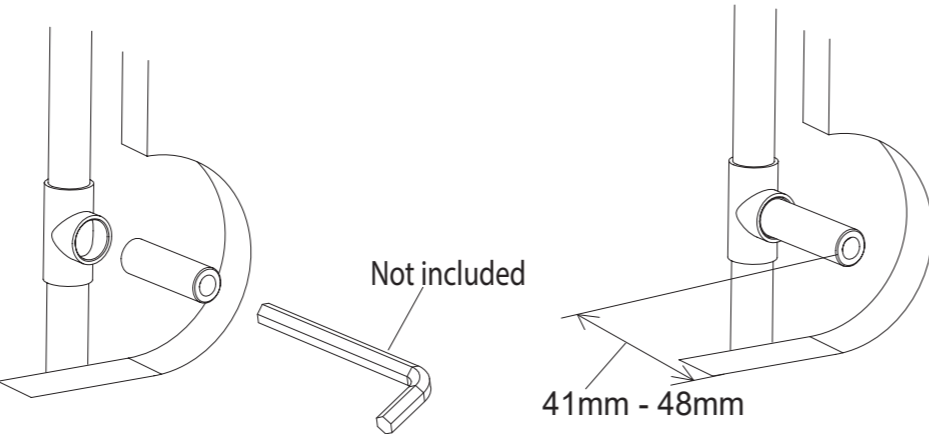
2. Dimension



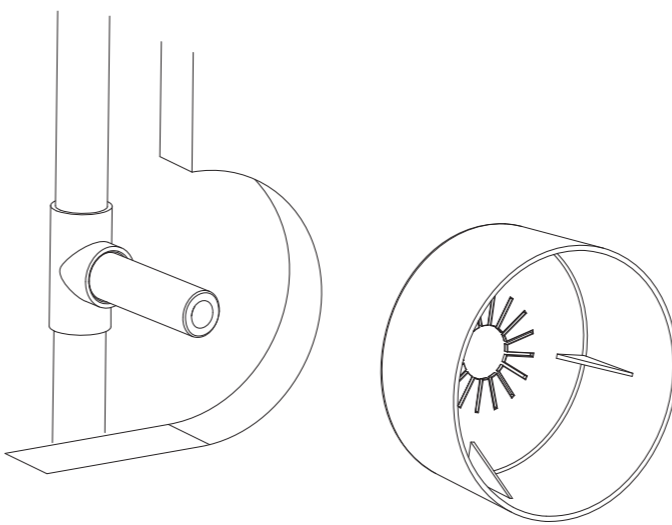
3. Create a cut out in the wall of the appropriate size



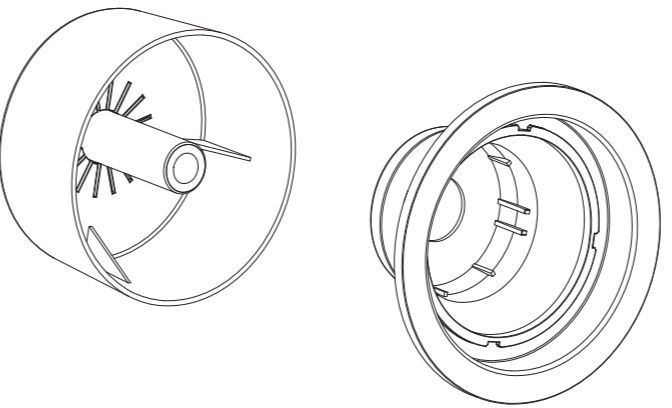
4. Install the 1/2" connector as shown below



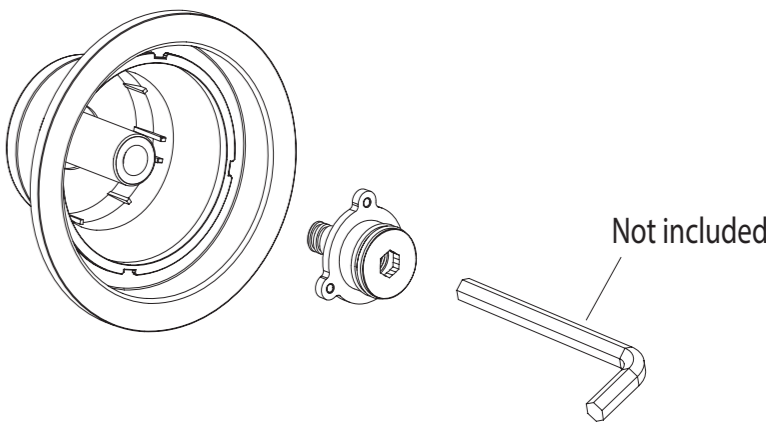
5. Install the cover as shown below



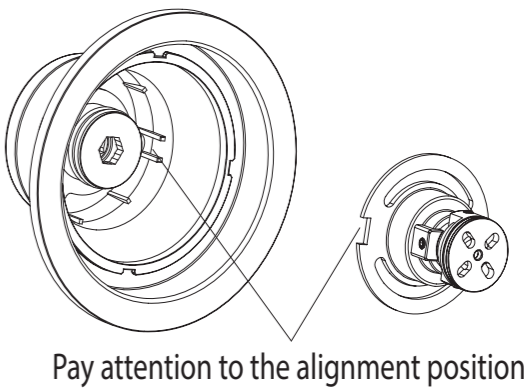
6. Install the cover plate as shown below



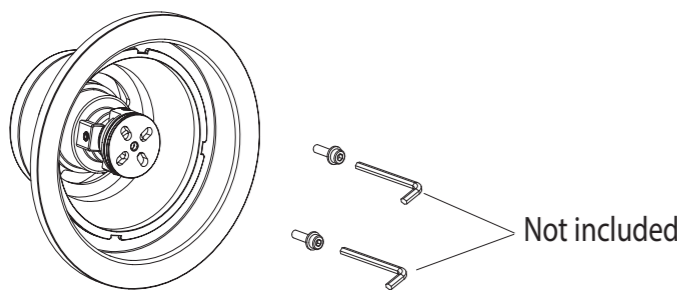
7. Install the connector assembly as shown below



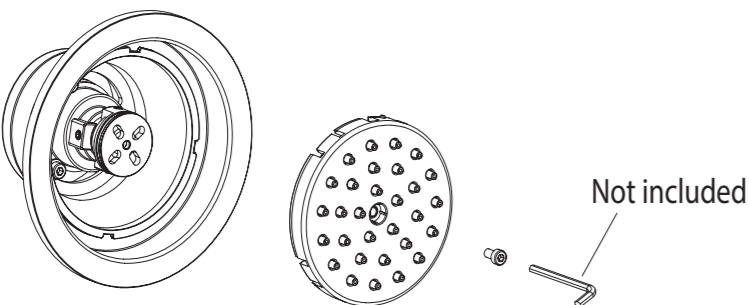
8. Install the main body as shown below



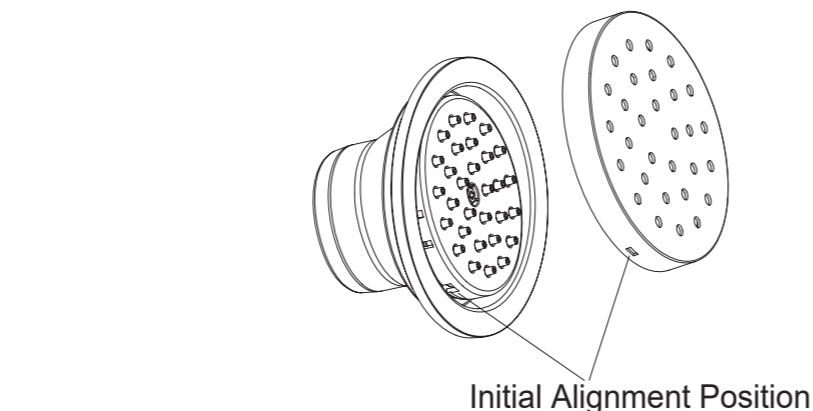
9. Lock the main body on the connector with the M4x20 Screws



10. Lock the nozzle plate on the main body with the M4x12 Screws

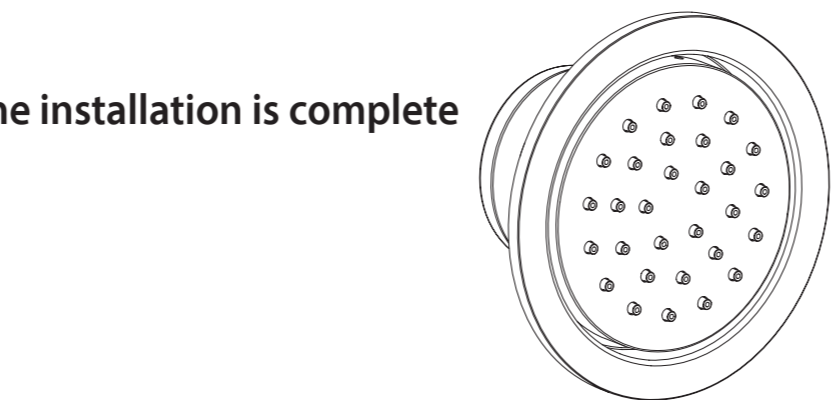


11. Install the front plate as shown below



Second Alignment Position

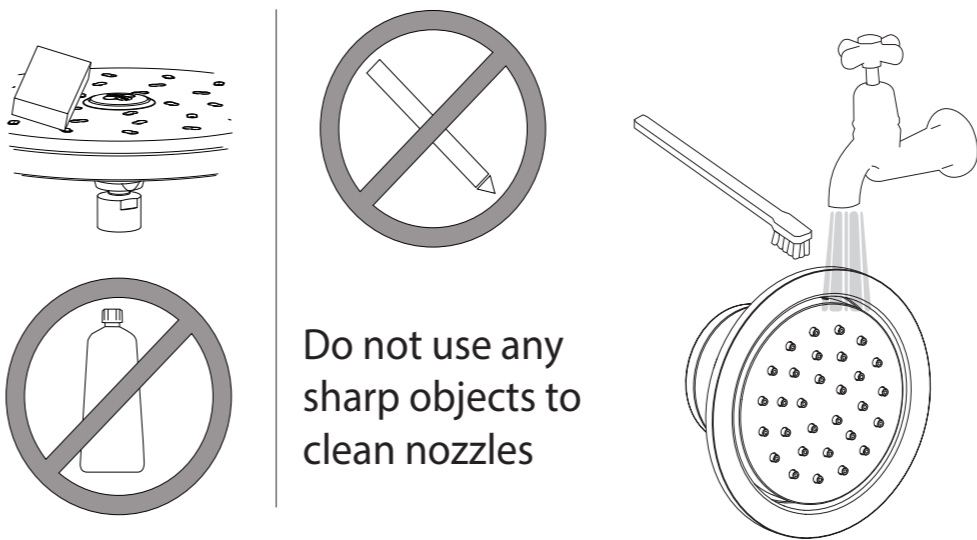
12. The installation is complete



CLEANING

Water contains lime which remains on the surface after the water has evaporated. These lime deposits can be prevented from forming by wiping immediately after use.

To clean the chrome-plated surfaces use a soft cloth, soap and warm water. Do not use cleaning agents that contain a corrosive substance.



100.6430 - 1/2" Body Jet With Swivel Action

FLUSSO
LUXURY PLUMBING FIXTURES